

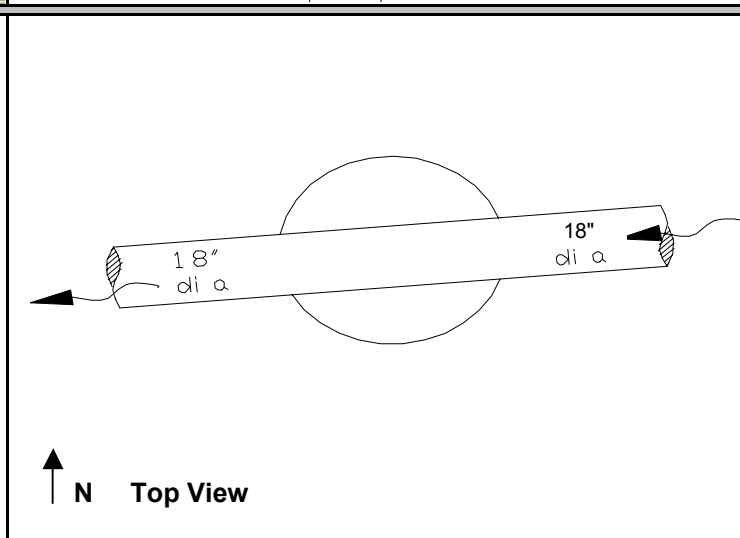
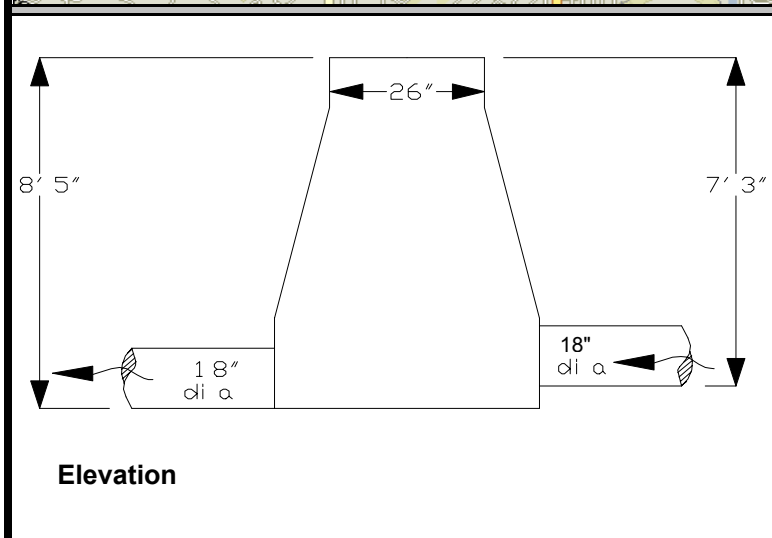
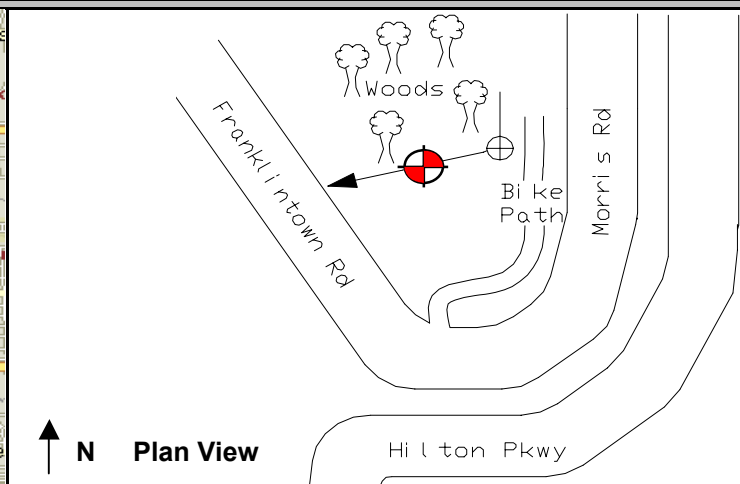
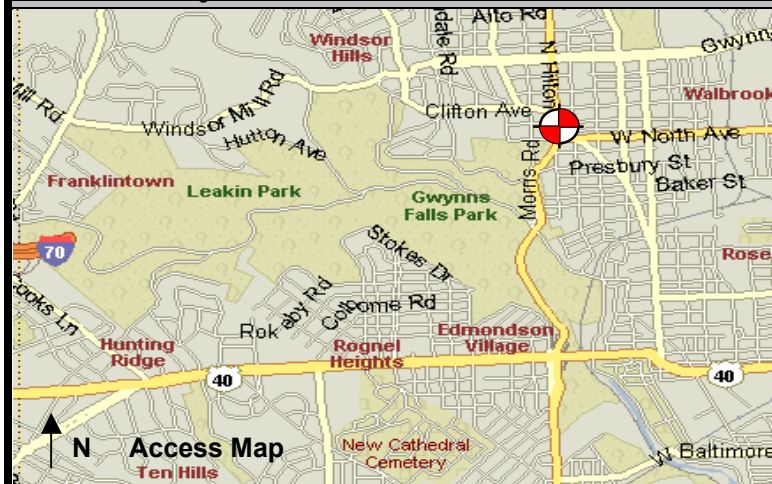


a division of ADS Corporation

# Baltimore SSO Site Investigation Report

FM Initials: DF  
Project Number: 17 Walbrook

Site Name:	17_GFE30I	Monitor Series:	4000	Monitor S/N:	1134	Manhole #:	GFE30	<b>Investigation Information:</b> Upstream Input: (L/S, P/S) N/A Upstream Manhole: GFE29 Downstream Manhole: GFE31 Depth of Flow: 2.0" Description of Site Hydraulics:  No abnormal flow conditions were observed.
Address / Location:	Morris Rd and Franklinton Rd		Map Page #:	7	Map Grid #:	9FF		
			Pipe Height:	18"	Pipe Width:	18"		
			IP Address:	166.143.099.124				
Access:	Walk (Residential)		GPS Coords:	N DD.dddd 39 18.196		W DD.dddd 76 40.450		
Date/Time of Investigation:	June 26, 2003							



<b>Manhole Information:</b>	
Manhole Depth:	8'5"
Manhole Material / Condition:	Brick / Good
Active Drop Connections?	No
System Character:	
<input checked="" type="checkbox"/>	Residential
<input type="checkbox"/>	Commercial
<input type="checkbox"/>	Industrial
<b>Notes:</b>	
<b>Legend:</b>	
	Cast Iron Flap Valve
N.T.S.- Not to scale	
SS- Sanitary Sewer	
SWS- Storm Water Sewer	

The monitoring period ended as of December 31, 2004.